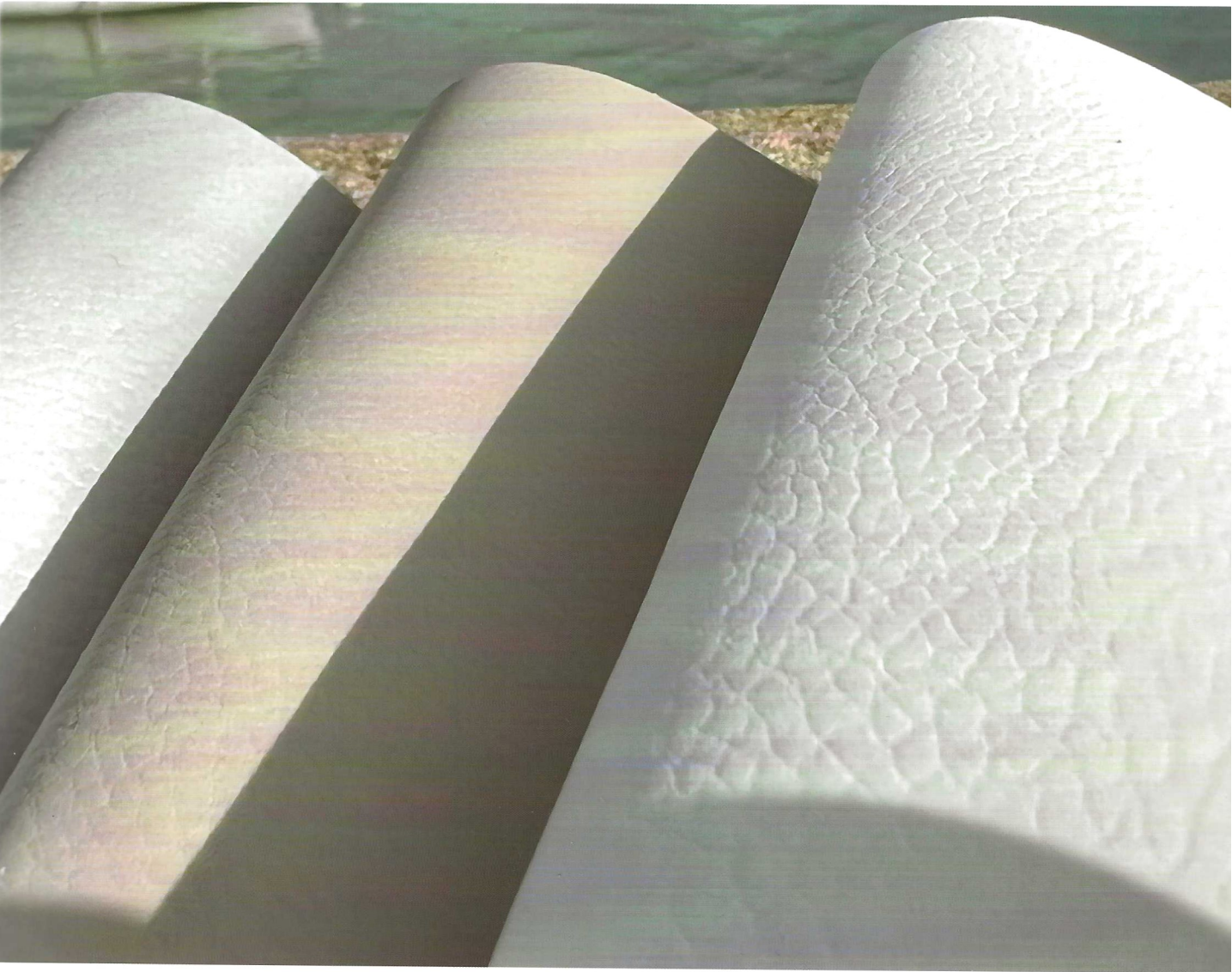


Sileather[®] EU COLLECTION

V.3



Silicone Fabric



Contract



Hospitality



Children



Healthcare



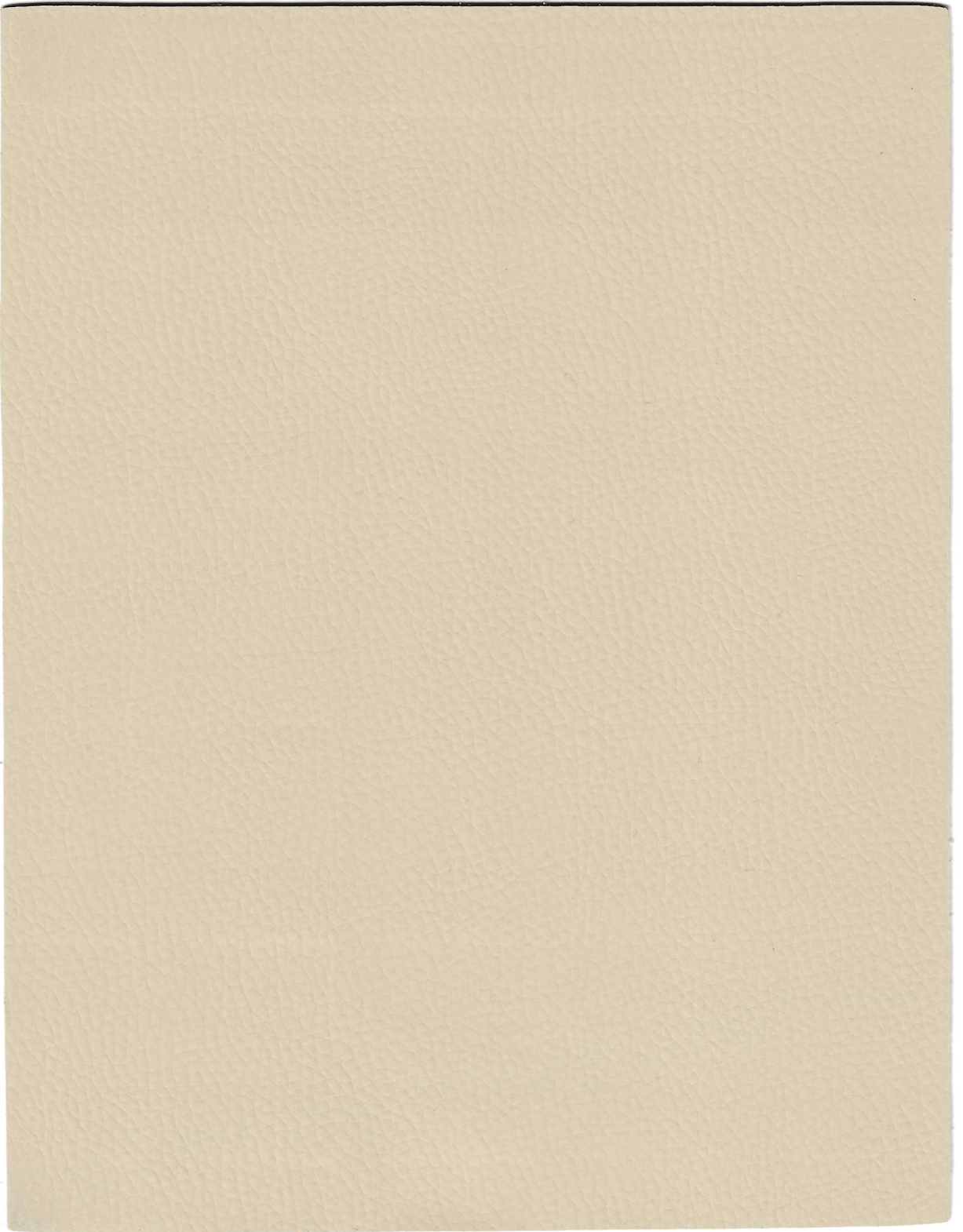
Electronics



Transportation



Apparel



Premier-301 Cream



Premier-120 Snow



Premier-376 Pearl



Premier-300 Ivory



Premier-301 Cream



Premier-303 Sandstone



Premier-378 Cloud



Premier-304 Silver



Premier-325 Salt



Premier-326 Morning Fog



Premier-314 Stone



Premier-1024 Beige



Premier-307 Apricot



Premier-302 Brick



Premier-308 Caramel



Premier-313 Amber



Premier-310 Cherry



Premier-312 Merlot



Premier-319 Eggplant



Premier-225 Sapphire



Premier-316 Peacock



Premier-927 Vegas



Premier-371 Cedar



Premier-373 Soot



Premier-374 Hickory



Premier-324 Onyx



Premier-321 Pine



Premier-329 Spruce



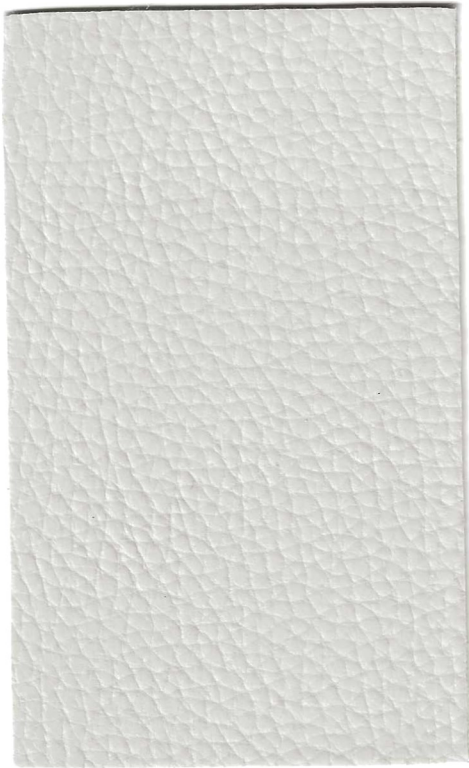
Premier-323 Jazz



Premier-230 Navy



Premier-110 Ink



Original-378 Cloud



Original-256 Rice



Original-301 Cream



Original-329 Spruce



Original-326 Morning Fog



Original-313 Amber



Original-314 Stone



Original-230 Navy



Mustang-874U Oyster



Mustang-857U Eggshell



Mustang-863U Straw



Mustang-831U London



Mustang 854U Lighthouse



Mustang 858U Lime



Mustang-851U Fox



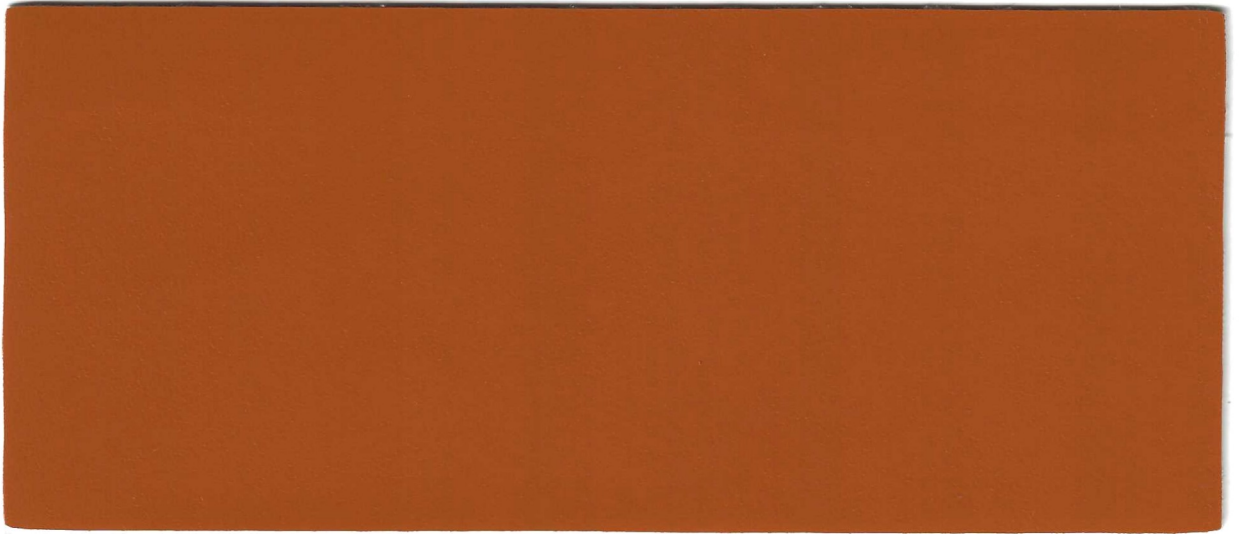
Mustang 840U Chestnut



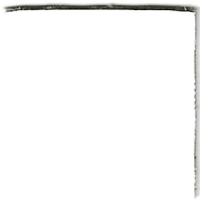
Mustang 493U Iron



Mustang-835U Winter



Theory-226 Citrouille



Theory-443 Milk



Theory-300 Ivory



Theory-378 Cloud



Theory-305 Smoke



Theory-438 Incense



Theory-226 Citrouille



Theory-1647 Ferrari



Theory-312 Merlot



Theory-224 Pecan



Theory-439 Chocolate



Theory-437 Cashmere



Theory-746 Citrus



Theory-747 Avocado



Theory-510 Fern



Theory-322 Midnight



Theory-511 Lagoon



Theory-512 Bluejay



Theory-513 Mist



Theory-230 Navy



Theory-324 Onyx

TECHNICAL DATA

■ APPLICATION

Upholstery and General Purpose

■ MATERIAL COMPOSITION

Surface - 100% Silicone
Backing - Polyester

■ DIMENSIONS

Width - 1.37meters
Thickness - 1.0 mm
Weight - 640g/m²±10%
Roll Size - 30meters

■ INHERENT FLAME RESISTANCE

Silicone is inherently flame resistant and does not contain flame retardants that can bring health concerns.

CA TB117-2013
FMVSS #302
IMO 2010 FTP Code (Part 8)
NFPA 260 Class I
UFAC Class I
BS 5852 (Crib 5)
ASTM E84 (Adhered)
EN 1021 (Part I and II)
EN 45545
B1-B

■ ENVIRONMENTAL BENEFITS

PETA approved
PU and PVC Free
Ultra Low VOCs
Recyclable
RoHS 2.0, REACH 175, Prop 65 compliant
CAL 01350 Compliant
AB-1817 Compliant
AB-2998 Compliant
No Flame Retardant Additives
Advanced Solvent Free Technology
No Toxic by-Products
No Formaldehyde, Lead, PFCs, Antimony Trioxide, or Tris
No Plasticizers, Phthalates or BPA
No Harm to Air or Water
Odorless

■ PHYSICAL PERFORMANCE

Wyzenbeek Abrasion, 250,000+ double rubs*
Martindale Abrasion, 150,000+ cycles
UV Stability - ASTM D4329-05(QUV), 1500+ hours
Hydrolysis Resistance - ASTM D3690-02, 14+ weeks
Cold Crack Resistance - 5# roller, CFFA-06, -20°F (-30°C)
Salt Spray Resistance - ASTM B117, 1000+ hours
Low-temp Flex Resistance - ISO17694, -30°C, 200,000+
Colorfastness to Light - AATCC-16.3, 200h, Grade 4.5
Colorfastness to Crocking - AATCC-8, Wet & Dry, Class 5
Colorfastness to Perspiration - AATCC-15, Class 5
Flex Resistance - ASTM D2097-91
Break Strength ASTM D751-19 Warp:231.6lbs, Fill: 233.8 lbs.
Trap Tear ASTM D751-19 Warp:47.7lbs, Fill: 46.2 lbs.

*Abrasion test results exceeding ACT Performance Guidelines are not an indicator of product lifespan. Multiple factors affect fabric durability and appearance retention.

■ CLEANING & MAINTENANCE

Cleaning Code - W/S
Bleach Cleanable - 20%
Isopropyl Alcohol - 70%
Strong Stain Resistance
-Mascara/Lipstick/Nail Polish Remover
-Suntan Lotion/Moisturizer
-Coffee/Wine/Orange Juice
-Chocolate/Mustard/Cooking Oil
-Blood/Urine/Betadine/Sweat/Stomach Acid
-Crayon/Ink/Marker/Ballpoint Pen
-Indigo Denim Transfer

Do not use polishes or surface treatments on Sileather® materials.

Common stains can be removed with mild soap and clean water. For stubborn stains, it is recommended to use isopropyl alcohol, diluted bleach(1:4 water)or approved professional cleaning agents. Clean within 24 hours. It is recommended that you clean and maintain your Sileather® products on a monthly basis.

For healthcare grade disinfectant, please refer to our complete cleaning guide.

Alcohol and alcohol-based cleaners are combustible. Please handle with care. Use only a small amount of detergent to avoid any source of ignition. Wear protective gloves and be sure to clean in a well-ventilated area. Please keep hydrocarbons, benzene solvents, and cyclosiloxane oligomers away from Sileather® fabrics. Sileather® can neither guarantee, nor take responsibility for specific results. Under no circumstances shall Sileather® be liable for any incidental, consequential, or other damage resulting from negligence, misuse, mishandling or exposure of any chemicals used in connection with maintenance. Users must read the product specifications and determine appropriateness for specific applications. All label instructions on their use and precautions should be followed



Sileather® silicone fabrics qualify for these environmental and green building programs:
Leed V4, BREEAM, ILFI Living Building Challenge, CA Section 01350, CHPS, US EPA-Federal Purchasing



Cruiseship
Grade



07831 477816
robert@lindhurstgroup.co.uk
www.sileatheruk.co.uk